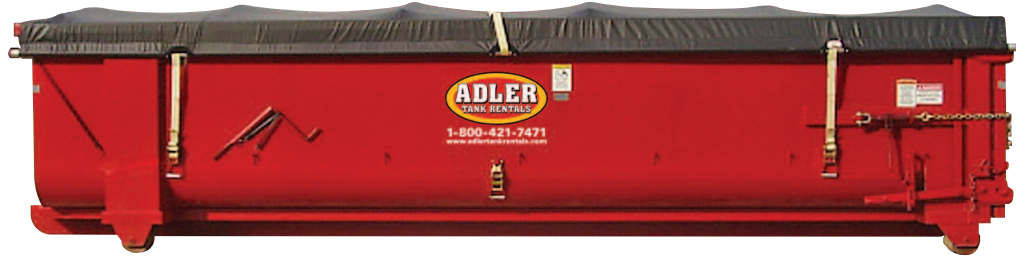


## WATERTIGHT ROLL-OFF BOXES



ADLER TANK RENTALS OFFERS ROLL-TARP, WATERTIGHT ROLL-OFF BOXES IN 20- TO 40-YARD CAPACITIES. THESE BOXES FEATURE HORIZONTAL-SWINGING, FULLY GASKETED, WATERTIGHT DOORS WITH NO CROSSBARS TO TRAP DEBRIS WHEN DUMPING. EACH IS EQUIPPED WITH A HEAVY-DUTY VINYL CANVAS TARP. GASKETED HARD-TOP BOXES ARE ALSO AVAILABLE.

All Adler boxes are designed with a convenient roll-off chassis, making them easy to transport and position with a standard roll-off frame truck. To suit your specific needs, Adler boxes may be specified with a bare steel interior or polyethylene liners.

### Mechanical Features

- ▶ 20- to 40-cubic-yard capacities (wall height determines capacity)
- ▶ Minimal footprint
- ▶ Gasketed rear doors
- ▶ Roll-off truck compatible
- ▶ Estimated weight 6,300 lbs

### Safety Features

- ▶ Safe Operation reminder decals applied
- ▶ Reinforced guard plates on front
- ▶ Stringent and thorough maintenance program

### Comprehensive Service

Adler Tank Rentals provides containment solutions for many hazardous and non-hazardous products. We offer 24-hour emergency service, expert planning assistance, transportation services, tank/box repairs and tank/box cleaning. All of our rental equipment is serviced by experienced Adler technicians and tested to meet the most stringent industry standards.



**Strategic Storage Solutions** 800-421-7471 [www.adlertankrentals.com](http://www.adlertankrentals.com)

STORAGE TANKS | MOBILE LIQUID STORAGE | EMERGENCY LIQUID STORAGE | HAZARDOUS WASTE ENVIRONMENTAL TANKS | FRAC TANKS | ISO TANKS | INDUSTRIAL WASTE TANKS | INDUSTRIAL TANKS SOLUTIONS STORAGE TANKS | WASTE STORAGE TANKS | HAZARDOUS SOLUTION STORAGE TANKS OSHA TANKS | NESHAP TANKS | EMERGENCY RESPONSE TANKS | STORAGE TANKS | MOBILE LIQUID

## WATERTIGHT ROLL-OFF BOXES



ADLER TANK RENTALS OFFERS ROLL-TARP, WATERTIGHT ROLL-OFF BOXES IN 20- TO 40-YARD CAPACITIES. THESE BOXES FEATURE HORIZONTAL-SWINGING, FULLY GASKETED, WATERTIGHT DOORS WITH NO CROSSBARS TO TRAP DEBRIS WHEN DUMPING. EACH IS EQUIPPED WITH A HEAVY-DUTY VINYL CANVAS TARP. GASKETED HARD-TOP BOXES ARE ALSO AVAILABLE.

All Adler boxes are designed with a convenient roll-off chassis, making them easy to transport and position with a standard roll-off frame truck. To suit your specific needs, Adler boxes may be specified with a bare steel interior or polyethylene liners.

### Mechanical Features

- ▶ 20- to 40- cubic-yard capacities (wall height determines capacity)
- ▶ Minimal footprint
- ▶ Gasketed rear doors
- ▶ Roll-off truck compatible
- ▶ Estimated weight 6,300 lbs

### Safety Features

- ▶ Safe Operation reminder decals applied
- ▶ Reinforced guard plates on front
- ▶ Stringent and thorough maintenance program

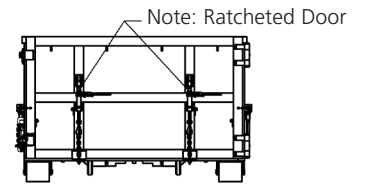
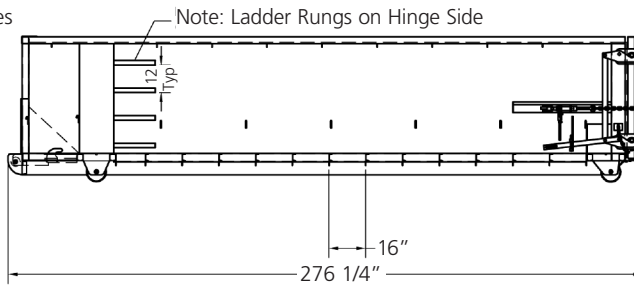
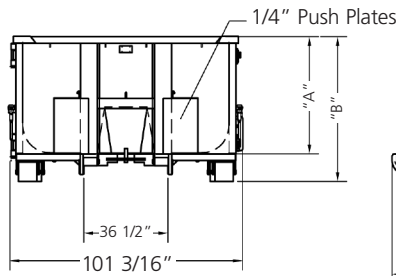
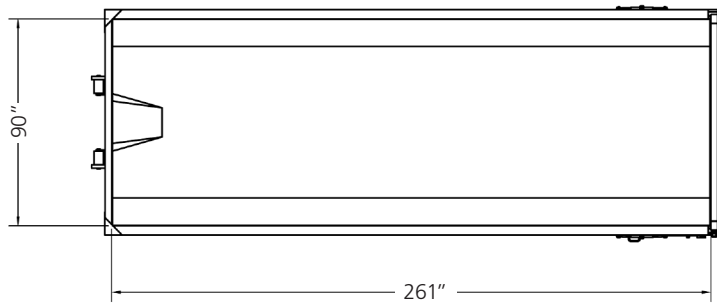
### Comprehensive Service

Adler Tank Rentals provides containment solutions for many hazardous and non-hazardous products. We offer 24-hour emergency service, expert planning assistance, transportation services, tank/box repairs and tank/box cleaning. All of our rental equipment is serviced by experienced Adler technicians and tested to meet the most stringent industry standards.



**Strategic Storage Solutions** 800-421-7471 [www.adlertankrentals.com](http://www.adlertankrentals.com)

STORAGE TANKS | MOBILE LIQUID STORAGE | EMERGENCY LIQUID STORAGE | HAZARDOUS WASTE ENVIRONMENTAL TANKS | FRAC TANKS | ISO TANKS | INDUSTRIAL WASTE TANKS | INDUSTRIAL TANKS SOLUTIONS STORAGE TANKS | WASTE STORAGE TANKS | HAZARDOUS SOLUTION STORAGE TANKS OSHA TANKS | NESHAP TANKS | EMERGENCY RESPONSE TANKS | STORAGE TANKS | MOBILE LIQUID



CONTAINER	A	B
20 CU YD	3'-5"	4'-5"
25 CU YD	4'-3"	5'-3"

FLAT FRONT MODEL

**Application Description**

Product to be Stored \_\_\_\_\_

Mixture of Chemicals \_\_\_\_\_

Rinse Water \_\_\_\_\_

pH \_\_\_\_\_

Non Hazardous

Hazardous (describe fully) \_\_\_\_\_

\_\_\_\_\_

Temperature \_\_\_\_\_

Estimated Duration of Rental \_\_\_\_\_



**Strategic Storage Solutions** 800-421-7471 [www.adlertankrentals.com](http://www.adlertankrentals.com)

STORAGE TANKS | MOBILE LIQUID STORAGE | EMERGENCY LIQUID STORAGE | HAZARDOUS WASTE ENVIRONMENTAL TANKS | FRAC TANKS | ISO TANKS | INDUSTRIAL WASTE TANKS | INDUSTRIAL TANKS SOLUTIONS STORAGE TANKS | WASTE STORAGE TANKS | HAZARDOUS SOLUTION STORAGE TANKS OSHA TANKS | NESHAP TANKS | EMERGENCY RESPONSE TANKS | STORAGE TANKS | MOBILE LIQUID